

SAM!

STATELINE AREA MODELERS

OCTOBER/NOVEMBER 2018



President

Bob Greenlee

rlgreenlee@mediacombb.net

Vice President

Art Giovananni

agiovananni1@wi.rr.com

Treasurer

Bob Tatman

bobt@charter.net

Secretary

Frank Gattolin

fsg771@sbcglobal.net

Chapter Contact and Newsletter

Alan Zais

ajzais@aol.com

*SAM meets at 7:00 p.m.
on the third Friday of
each month at the
Durand Methodist
Church,
102 East Main Street,
Durand, Illinois.
Enter at the east door.
Come visit us!*



In this issue

Chuck Yeager & the ghost of the Woman in Red!

The Horror of the Clown Motel!

Ghost Army Air Base!

Butch O'Hare Best Junior Award Winner!

And much more!





Art Giovannonini's Revell Bell H-13H Helicopter.

Art's model has the MASH markings (Mobile Army Surgical Hospital) for an ambulance helicopter. He left the canopy removable to ease cleaning for inevitable dust.

If Art had the room he can pick up this full scale helicopter for only \$150,000 at Trade-A-Plane. A 1959 Bell 47G2 and a former U.S. Drug Enforcement ship, the owner also states that it has a "nice bubble", the doors are available, and the owner will even throw in a free trailer.



Art also started on this Iraqi Mig 21 (*left*) as a challenge from Ernie Petit. This Mig 21 (*below*) is at the abandoned 126th Fighter Aviation Regiment in Mongolia (*below left*).

Source: *The Tell Tale Heart of the Supreme Soviet* by Phil Butler
<http://our-russia.com/543482007/russian-soviet-photographic-journey>



Josh Burfield built the Hasegawa Mig 21 (right) using Model Master Enamels.



Above is this abandoned Mig 21 outside Bulgaria.

Source: *Urban Ghosts: Hidden History and Offbeat Travel* <https://www.urbanghostmedia.com/2017/04/retired-mikoyan-gurevich-mig-21-fishbed/>.



Tom Crepeau built the F4B using 10 mm metal wires for the rigging. While metal can be valuable for modeling, Tom does join the medical community in discouraging metal ingestion...

...yet in our metal airplane eating factoid, French entertainer Michel Lotito disagrees. According to the UK *Telegraph* (and many other sources!) Michel ate many unusual things from 1959 to his death in 2007, "His diet since 1966 included 18 bicycles, 15 supermarket trolleys, seven TV sets, six chandeliers, two beds, a pair of skis, a low-calorie Cessna light aircraft and a computer. He is said to have provided the only example in history of a coffin (handles and all) ending up inside a man. By October 1997, he had eaten nearly nine tons of metal."



Source: <https://www.telegraph.co.uk/news/picturegalleries/howaboutthat/2976278/Weird-world-records-bizarre-entries-in-the-Guinness-Book-of-World-Records.html?image=3>

Bob Greenlee turned his 1/144 Stuka build into a R/C diorama. He used a 1/72 figure and scratchbuilt the transmitter.



Bob also brought in his two J4F Ducks given to him by Ernie and a



work in progress while he searches for decals.

Far Sighted Department

Eric McClurg's Stegacow is based on the Far Side comics and his build chronicles the period 1 milliOn B.C. when Stegacows ruled the Earth. Eric cast a resin head from a toy cow and added udders to the Tamiya Stegasaurus, and then painted it as a cow. Stegacow received third place in Humor at the Orange Con!



"Now this end is called the thagomizer . . . after the late Thag Simmons."



Chuck Yeager and the Ghost of the Woman in Red

Tonopah, Nevada, (population 2,478) is located midway between Reno and Las Vegas at the juncture of Highway 95 and Highway 6 and known for some of the



unusual towing jobs of Cal Nevada Towing and Repair (above right) and the Clown Motel which is located next to the town cemetery.



Tonopah is also home to the Mizpah Hotel, completed in 1908 soon after the mining town was founded, closed in 1999 and restored and reopened in 2011. Senator Key Pittman's body was kept in a bath tub of ice in the Mizpah when he died of a heart attack on the eve of the 1940 election, until his supporters could learn the election results and appoint a successor (far right, along with headlines "Oil Fields Vital to Hitler Ravaged by Quakes" and "Ten Poisoned by Pancakes"). And the Mizpah has also been featured on *Ghost Adventures* on the Travel Channel for its haunting by the Lady in Red, one story that she was a bride killed by

her jealous husband on the fifth floor.



Verna and I spent a night at the Mizpah. We didn't encounter the Lady in Red, but we did find a hallway filled with pictures of visitors to the Mizpah and Tonopah. One of them was Chuck Yeager.



A little research on the internet found that after receiving his wings, Chuck Yeager was transferred in March, 1943 to the Tonopah Army Air Base and the 363rd Fighter Squadron, 357th Fighter Group to train with the Bell P-39 Airacobra. The Air Base was also well know for the B-24s stationed there and this picture (left) of B-25s at the desert base.

The remains of the base can be found a few miles north of Tonopah to the east of Highway 6. The aircraft hangers (below) are the largest structures.

Another interesting site is about 15 minutes south of Tonopah on Highway 95 to Goldfield (population 268) and The International Car Forest of the Last Church, located about a quarter mile east of the highway at the southern entrance to the town. Here you can find some unique painting and diorama opportunities for your cars!





The International Car Forest of the Last Church has about forty cars, buses, pickups and motorcycles. Originally a concept by Goldfield resident Mark Rippie, Reno resident Chad Sorg

relocated near the site to continue his art.



In The Year 2525 Department

Neil Butler brought in his Gundam builds.

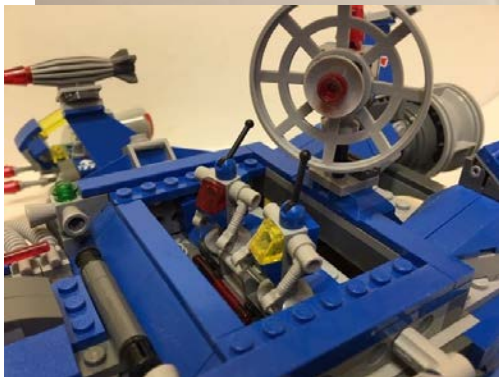


Neil warned us not to look directly at the LED, so we did. He said the kits are 1/100 scale and snap together using poly caps. The gun tanks are named Papa, Mama and Baby. The one with the LED also has a lit instrument panel and contains another ship that is the core fighter. the cannons have springs for the recoil. Neil overcoated them with Pledge Future floor covering for a high gloss.



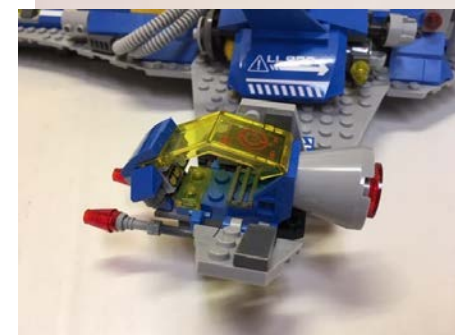


Tom Crepeau brought in a Lego build that represents the truck and trailer in his driveway. Tom said it was a fun build that was done in 90 minutes.



My own Lego build of Bennie's Spaceship ("Spaceship! Spaceship! Spaceship!") from 2014's *The Lego Movie*.

Astromech's (left) protect the AE35 unit (you're welcome, *2001:A Space Odyssey* fans).



Fighters (left) can detach from each wing.

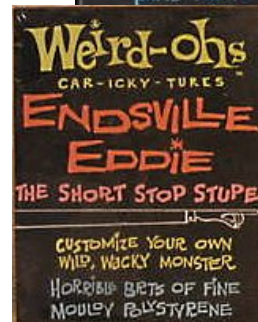
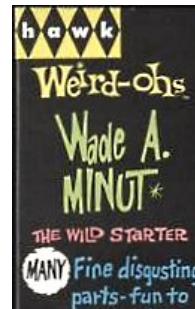
Bennie has the broken chin strap iconic of the 1980's figure.





River's Weird-oh Huey's Hut Rod The Way Outhouse kit was perfect for our Halloween issue.

The Weird-oh's Car-icky-tures were based on the work of illustrator Bob Campbell who did over 250 art works for Hawk models which also included Fly Boys, Space-Outs, Astro-Nuts, Track Wackeys and The Despicables.



SAM Goes To The Movies: *The Late Night Double Feature Picture Show*



In 2014's *The Lego Movie* (96% on *Rotten Tomatoes*!) way too happy and coOtent construction worker Emmett Brickowski is leaving his construction site when he sees a woman, WyldStyle, searching in the site. Calling her her, he falls into a hole (and falls and falls) and is knocked unconscious. He awakens to find himself being interrogated by Good Cop/Bad Cop (his head simply turns to reveal the one interrogating Emmet) who want to know why Emmet has the *Piece of Resistance*, which is a Super Glue bottle cap that is attached to Emmet's back.



When Good Cop leaves to get pastries for everyone before using a giant (James Bond/Goldfinger type) laser on Emmet, Emmet is freed by WyldStyle. Believing that Emmet is *The Special*, the prophesized person with the *Piece of Resistance* who will save everyone from Lord Business and his plan to superglue everything into perfection, she brings him to Vitrovius, a mysterious blind wizard who then works to train Emmet into becoming a Master Builder before Lord Business Taco Tuesday surprise (spoiler alert: it is not a good surprise).

Emmet, a reluctant hero, is aided in his quest by Batman (WyldStyle's boyfriend who builds only with back Legos, and sometimes very dark gray), UniKitty, MetalBeard (a pirate who has replaced his missing body with far more than the traditional hook and peg leg), Benny (1980's something space guy) and Vitrovius. Along the way they run into Shaquille O'Neal, C-3PO and Lando Calrissian, Aquaman and Superman (who tries to distance himself from his superfan Aquaman) and more. They find themselves in the Wild West, Cloud Cuckoo Land (there are no rules except for the long list of rules from Unikitty), under the ocean, in Lord Business's tower (on the infinitiess floor) and the city.

A central theme to the film is the Master Builder. Citizens carefully construct according to directions (Emmet: "Show me what to do, and how to do it") but it is the Master Builders who create without instruction and with limitless imagination.



The 1970 movie *M*A*S*H* (85% on *Rotten Tomatoes*!) has an Army hospital and is set in Korea but otherwise has little in common with the subsequent television series. A dark comedy, it follows the story of two surgeons, Hawkeye Pierce and Duke Forrester, who come to the 4077th in a stolen jeep. They're excellent surgeons but are also insubordinate drinking womanizing pranksters who quickly clash with the incompetent and hypocritical Major Burns. They train Ho-Jun, the young Korean attendant to make martinis and arrange to have Major Burns transferred from their tent while adding a new "chest cutter" Trapper John McIntyre.



Major Burns finds a kindred spirit and a secret affair with the arrival of the new head nurse, Major Houlihan, who is also rigidly by the book for efficiency. Major Burns and Major Houlihan, desperately distressed by the actions of Hawkeye, Duke and Trapper John and the casual authority of the camp commander, Colonel Blake, type a letter with their accusations and send it to General Hammond.

There are a few events prior to the arrival of General Hammond such as Major Burns being involuntarily shipped to psychiatric care and a wager that involves Major Houlihan and raising the shower tent, for example, but General Hammond is less concerned with the letter from Major Burns and Major Houlihan than the opportunity to set up a football game (and several thousand dollars in bets) with the 4077th and the 325th Evacuation Hospital.



Above Major Houlihan arrives at the 4077th. A good picture for studying the helicopter's weathering.

Just before this, Colonel Blake prepares for General Hammond's arrival with a speech that he continually tries to memorize but only gets past the first few lines ("Ever since the dark days of Pearl Harbor...") and the gift of a medical evacuation helicopter for the General.

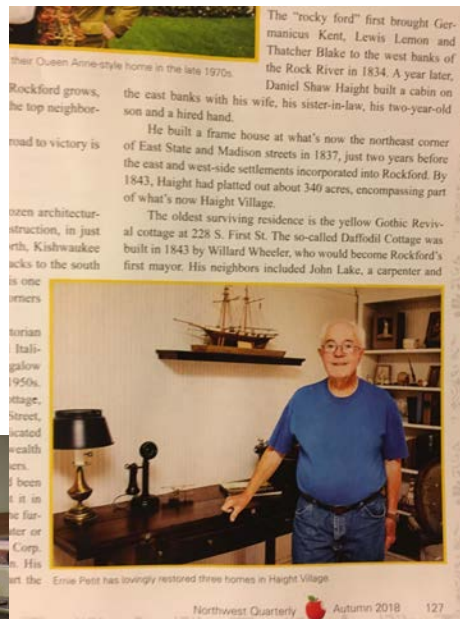


Art's MASH helicopter build reminded me of the helicopter model in the movie. I wasn't able to find a picture but I recall the model was quite large, probably about 1/32 scale. Interestingly there are 1/32 and 1/35 Bell 47D and H-13H helicopters, but I can't determine if any of these kits existed in 1970 or if the movie crew created their own model. In any event, thanks for the reminder and letting us revisit the movie, Art!

A Good Read Department

It was great to come across a story about Ernie Petit in the Autumn *Northwest Quarterly*! Ernie has restored homes in Rockford's historic district.

Ernie had also brought in this P-51 to the October meeting.



Ernie's P-51, S/N 41161, was flown by Captain Ernest Fiebelkorn, who received the Third Distinguished Flying Cross with Valor for his July 6, 1950 action in Korea.

The citation reads "Captain Ernest C. Fiebelkorn, AO753639, United States Air Force (now missing in action) distinguished himself by heroism while participating in aerial flight as pilot of an F-82 type aircraft on 6 July 1950. Captain Fiebelkorn led a flight of four F-82 all-weather fighter type aircraft to the Suwon-Seoul area, Korea, upon very short notice, and

over a long distance under extremely adverse weather conditions. The mission of the flight was to contact a forward control aircraft in order to receive instructions for strafing a group of enemy tanks that had broken through our lines.



The entire target area was covered by a low under cast and after several unsuccessful attempts by Captain Fiebelkorn to contact the controller aircraft, he did voluntarily let down through the dangerous undercast over mountainous terrain, in a final attempt to make contact and engage the enemy. No more was heard from Captain Fiebelkorn by the remainder of the flight waiting aloft. The exemplary courage and selfless devotion to duty demonstrated by Captain Fiebelkorn reflect the highest credit upon himself and the United States Air Force."

Captain Ernest C. Fiebelkorn (left).

Source: Veteran Tributes: Honoring Those Who Served at <http://www.veterantributes.org/TributeDetail.php?recordID=530>.

Ernie also brought in the model box and the actual built model for the box art of the U.S.S. Halibut that he developed for Ideal Toy Company. At 1/170 scale the model was over 24" long with the molds dating to the 1960s and originally a battery operated model that would dive, surface and launch the Regulus missile. The box description notes that the model has several incorrect shapes as the sub's design parameters were classified at the time the model was created.

Galaxie Quest Department



Josh Burfield has been working on the AMT 1966 Ford Galaxie. The engine is done and he's



given himself a deadline of having it done by Christmas so he can give it as a gift for a friend.

This no rust 1966 Galaxie (above) is a Scottsdale, Arizona car for only \$39,500 (OBO) on Autotrader. It has a rebuilt 352 V8 and Candy Apple Red finish!



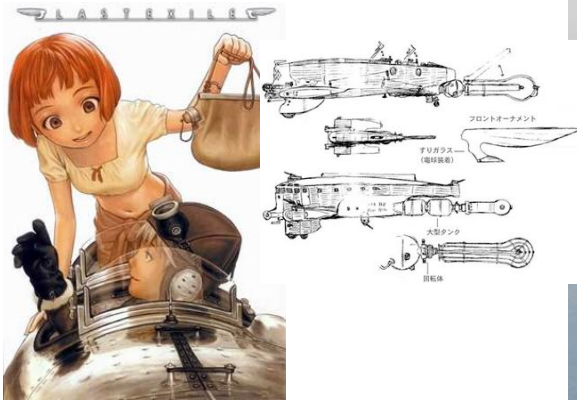
Eric's M50 is a work in progress. Eric said it started as a Sherman Firefly kit and he cut off the deck and is using a Formations resin turret.





Eric's Vanship is a Hasegawa kit from the Japanese animated series.

Vanships are used as aerial transportation on the world of Priest and are similar to Earth's golden age of aviation, using antigravity rather than wings. According to Wikipedia the Vanship is based on the Junkers A35 monoplane of the 1920s.



Excellence in Modeling Department



Stateline Area Modelers was privileged to sponsor the Best Junior Award for the 2018 Butch O'Hare Model Show! This is Conrad Chapman (with his

father) who was the winner of the Best Junior Award along with his winning entry! Conrad also had two nicely done figures. Congratulations, Conrad!

I Fought The Law Department

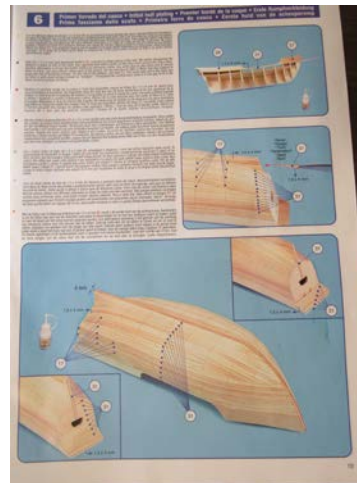


Bob Tatman said his Outlaw is turning into the car from purgatory. First his dog ate the body and Frank fixed it for him. Then he was ready to paint it and the air brush quit working (it was a Badger with a lifetime warranty so he

was able to send it in). He sprayed it rattle can white. He then tested a decal which shattered (it's a 1960s kit) even when he put decal overcoat on them. He spent a complete day on the internet to find replacement decals but they don't exist. And the pieces didn't fit well. We found this picture (*above right*) of purgatory racing, so we hope Bob is reassured that a purgatory build can be very successful and continue with his car.



Nautical But Nice Department



Dave Dini had quite a bit done on his La Pinta, the second in his series of three builds of the 1492 voyage by Columbus. He started it in August and expects about another year to go for completion. The planking is scribed to include nail marks.

As with his first build, the instructions are helpfully presented in seven languages allowing Dave to maintain his multilingual skills.

There are two replicas of the La Pinta. One is an attraction at a port in Bayona in Galicia, the site where the original La Pinta returned with the news of the discovered land. The second one is below at Palos de la Frontera along with replicas of the Pinta and Santa Maria.



Palos de la Frontera is filled with history of the 1492 voyage. From the tourist site we learn:

This town, of long seafaring tradition, was the cradle of the Discovery of America, since it was from its port that the three caravels set out in

August, 1492, to arrive two months later at the remote and strange lands of the New World. The port of Palos de la Frontera has lost some of the protagonism that it enjoyed 500 years ago, since it is nowadays situated inland, due to the 1755 Lisbon earthquake, which altered the coastline, and also, more recently, due to the construction of the docks that shelter the port of Huelva. Everything in this town recalls that 1492 adventure. Thus, in a small monolith that stands across from the Mudejar doorway of the church of San Jorge, from the 14th century, we see the engraved names of the seventy sailors from Palos (the Pinzón Brothers among them) who took part in the Discovery. In the town's main street we find the house that belonged to the Pinzón family, now restored, still bearing its coat of arms. In the outskirts, we find "la Fontanilla", a Mudejar fountain that was declared a National Monument, where Columbus supplied his caravels with water for the long journey. In the vicinity of Palos, on the banks of the Tinto river, we find the monastery of La Rábida, where Christopher Columbus stayed; inside we can see frescoes by painter Vázquez Díaz depicting scenes from the Discovery. At the Gothic church of La Rábida, the Virgin of Milagros is worshipped, as well as a 14th-century carving of Jesus on the Cross, one of the oldest in Andalusia.



River brought in her Fiat F 91 work in progress (*far right*) which has slowed while she's back in school. The plane in the *center* picture is from a YouTube video <https://www.youtube.com/watch?v=A08u6mZvf7g> in Italian. It appears that they're trying to mount the plane for display.



By page 16 Art was able to complete the Mig 21 (*left*) he started on page 2. He didn't have an interior so he painted black on the inside of the canopy.

His A7 Corsair (*right*) is a work in progress with the little brother in Art's Big Brother Little Brother program! It's Art's first work



on a figure and his Little Brother who is 13 years old wanted a plane with guns, bombs and rockets--Art said the Matchbox kit has all three.



Eric brought in his car builds which include the 1/24 Monogram 1965 GT 350 Cobra and five 1/43 resin cars that include the Shelby Daytona, GTP Mustang, GTP Probe, and GTP C100. Eric explained the GTP stood for the Grand Touring Prototype class and that



he used to watch them race when he lived near Sears Point in California. Eric used black ink for the lines. Sears Point is now known as the Sonoma Raceway.

The 2.5 mile track hosts racing series like NASCAR, IndyCar and NHRA and opened with the 12/01/68 SCCA Enduro, a four hour non spectator race.



So You're an AUTOWEEK Reader... Right?
(A motorsports enthusiast to boot!)
THEN THIS IS FOR YOU!

New Hillclimb Manager

COLORADO SPRINGS, Colo., Nov. 28 - The position of Pikes Peak Hillclimb general manager has been accepted by Jack Vauth, United States Auto Club supervisor of the annual event for the past two years.

Harmon/Shorman Porsche Wins Sears Point Inaugural

By John Kelly

Autoweek News Editor
SEARS POINT (Sonoma Co., Calif., Dec. 1) - Sears Point International Raceway held its first race today, a non-spectator regional race sanctioned by the San Francisco region, Sports Car Club of America.

The two-day meet was intended as a shakedown for the 2.5-mile road circuit and was highlighted by a four-hour endurance race today won by the team of Bob Harmon, 36, and Harry Shorman, 51, in a Porsche Speedster.

The endurance race was co-sanctioned by the Racing Drivers Club, a fraternity of drivers within the local region.

When the order to start engines was given, the Harmon/Shorman Porsche refused to start and it was pulled from the grid. The remainder of the 42-car field was flagged off and suddenly the Speedster engine fired. As Harmon brought it down the pit lane, the field disappeared around the first turn heading through the tortuous uphill section of the brand-new track. Harmon took up the chase.

Drivers in yesterday's regional races found the new pavement very slick due to the light rain which fell early in the morning.

The two-race meet pointed out many flaws in the course set-up. Sears Point general manager Jim Coleman told Autoweek, "We found several things we plan to correct," he said.

The Sears Point course is intended to stage NASCAR and USAC championship races as well as SCCA CanAm cars. The new track's first major test will be a National Hot Rod Assn. national drag race in March.

Fastest racing lap of the weekend was turned in by Don Delanore in a F/B Brabham at 2:02.30 while winning the regional F/SCCA race at a 71.2 mph average speed.

At the mid-way point of the endurance race, Harmon turned over the Porsche to Shorman with the car in fourth place, one lap behind the leading trio of Bob Tucknott/Jerry Brown, Porsche Speedster; the husband and wife team of Mary Ellen and John Wilkins in a former TransAm Mustang; and Milt Minter, fresh from the ARRC, and Forest Young in another Porsche Speedster.

Leading for the first hour was Fred Jensen/Jon Norman in their Chevy, a front-engine Chevy special with Devin body. Then the Tucknott/Brown car took over for the bulk of the second and third hour. The Wilkins family sat in first at two points for seven laps but both Tucknott/Brown and Wilkins cars were struck with ignition problems. Although the cars kept running, it allowed the Shorman/Harmon Porsche to move into first.

"It was a very interesting race," Shorman said after the event. "Our limited slip differential went out early and while I was driving the second half the throttle stuck wide open twice. I really had to feather my way around."

Gaining rapidly on the leader at the finish was the revamped Porsche 356 Spyder driven by Bob Jones and John Williamson. Both drivers span on their respective first laps in the car but managed to recover.

The Tucknott/Brown Porsche twice put a lap on the rest of the field (between pit stops) before ignition and oil consumption problems - probably related - slowed

The pictures of the Corvette racing at the 1968 Enduro and the newspaper story come from <http://www.earlycorvettes.com>, a fun site for pictures generally not found elsewhere.

Mail Department: SAM gets eletters



Bob Greenlee sent a picture of this 1/3 B-17G at the Rockton, Illinois airport (*far left*).

Frank Gattolin sent in a picture of his Hawk F4D Sky Ray (*left*) painted the way he'd have it if he were a NAS Commander! Frank challenges everyone as to why he has the Ford base.

Wayne Judge is planning to attend his first meeting in November and sent us pictures of his work!





International Plastic Modelers' Society/USA Membership Application / Renewal Form

New ☐ Renewal ☐ IPMS #:

Name: _____

Address: _____

City: _____ State: _____

Zip Code: _____

Phone: _____ E-Mail: _____

Chapter Affiliation, if any: _____

Junior (17 years or younger) \$17.00 _____ Date of Birth: _____

Adult One year \$30.00 _____

Two years \$58.00 _____

Three years \$86.00 _____

Canada & Mexico \$35.00 _____

Foreign Surface \$38.00 _____

Family (1 set of Journals) _____ ← Adult fee + \$5.00 # of cards? _____

Your Signature: _____

If recommended by an IPMS member, please provide his/her:

Name: _____ IPMS #: _____

PAYMENT OPTIONS:

Cash ☐ Amount: _____

Check ☐ Check #: _____ Amount: _____

Billing Address, if different than above -

Address: _____

City: _____ State: _____

Zip Code: _____